

6-6	657
-----	-----



Conspectus of Pursuits in Various Fields of Cultural Science
Being Conducted in University of Niigata and Problems Relevant to
the Pursuits

Present Situation	Requists
<p>1 General View of Studies:</p> <p>List of Fields and Themes of Study is given below</p> <p><u>Departments:</u></p> <p>Dept. of Humanities Dept. of Education</p> <p><u>Subjects:</u></p> <ul style="list-style-type: none"> a. Philosophy b. Fine Arts c. Psychology d. Pedagogics e. History f. Japanese Literature g. Eng. and Amer. Literature h. German Literature i. French Literature j. Law k. Economics <p><u>Themes of Study:</u></p> <p>(See List of Themes of Studies)</p> <p>2 Previsions for Promotion of Studies:</p> <p><u>(1) Study Funds:</u></p> <p>Financial support for studies provided for by the Budget is extremely lean, as shown by an example quoted in Table 1 below. And, moreover, the fact that the Departments concerned are of new establishment permits only a small portion of the funds to go into actual research work.</p> <p>Ratio between Funds for Cultural Sciences and those for Natural Sciences is 1 to 2.2 in the University, as is known by contrasting Table 1 with Table 2.</p>	<p>1. Want to have an extraordinary Budget for Studies, Facilities, Library, etc. compiled on the basis of the actual needs of a newly established University.</p> <p>2. Want to have Chairs of Psychology classified as experimental Chairs like those of Natural Science.</p> <p>3. It is feared this marked scantiness of allowance for Cultural Science will affect badly the research activities of the workers concerned. Improvement of the situation is earnestly desired.</p>

VI-608-IV

Table 1 Research Funds for Cultural Science

Items	Unit	Persons	Funds Granted by Edu. Ministry	Funds Actually Assigned by the School	Funds Used for Studies Proper	Sum per Researcher
Cultural Science	Prof. 72,000	25	4,360,000 Yen	3,797,092 Yen	2,278,254 Yen	25,548 Yen
	Assist. Prof. 40,000	64				

Table 2 Research Funds for Natural Science

Items	Unit	Persons	Funds Granted by Edu. Ministry	Funds Actually Assigned by the School	Funds Used for Studies Proper	Sum per Researcher
Natural Science	Prof. 200,000	52	18,847,000 Yen	16,558,301 Yen	9,835,880 Yen	55,817 Yen
	Assist. Prof. 120,000	47				
	Assistant 33,000	79				

Of the Research Funds furnished by the Government a fairly large portion has to go into maintenance of the School Plant and improvement of equipments and supplies. For this reason sixty per cent of the funds is actually available for research work.

(2) Funds for Scientific Researches

Scientific Research Funds for 1949 and 1950 itemized by year:

Want to have a bigger sum assigned for Cultural Science out of Education Ministry's Scientific Research Funds.

(A) Humanities Department

Items Years	Requests Made	Fund Requested	Requests Met	Sum of Fund Granted	Percentage of Requests Met	Sum Granted per Item (Average)
1949			1	12,000.00		12,000.00
1950	15	717,800.00	5	60,000.00	23 %	20,000.00

VI-608

(B) Comparison with Natural Science (for 1950)

	Request Made	Funds Requested	Requests Met	Funds Granted	Percentage of Requests Met	Percentage of Funds Granted	Sum Granted Per Item (Average)
Cultural Science	13	747,500	3	60,000	23 %	8.3 %	20,000
Natural Science	80	1,367,050	42	1,202,000	52 %	11.5 %	28,000

(3) Field-Trip Expenses:

Expenses for Attendance at Meetings of Academic Societies, On-the-Spot Investigations, long-term and/or other studies outside the school are curtailed drastically, so much so that exchange of ideas and information with other academic circles and studies needing corroboration of experiments, observation, etc. are much obstructed.

The actual condition is illustrated below:

Account of Expense Payments

Humanities Dept. Funds	Attendance at Courses in University Administration; Financial Aid for Teacher going abroad for study; Field-trips for research-work	Travelling and Moving Expenses for New-appointed Teachers	Liaison duties and Communications	Travel Expenses of Lecturers from other University
350,000 Yen	12 %	30 %	10 %	58 %

It is highly desirable that the largest possible amount be assigned for field-trips of study. In the current year, however, Expense Payments to Lecturers from other Universities are drawing so heavily on the Fund that little of it is left for the desired allowances.

(4) Physical Facilities for Studies:

Laboratories Seminary-rooms and Rooms for Research Materials are tabulated below. Inadequacy of Laboratories and Rooms for Reference Materials is threatening to throw the studies out of balance.

Need psychological laboratories and equipment.

Wish for well-equipped reference rooms for Departments of Law, Economics, History, Human Geography and Education.

VI-608

An illustration of facilities--those at present available in Humanities Dept:
Seminary-rooms

Faculty	Area square meters	Number of Teachers	Remarks
Philosophy	29.7	3	(1) Equipment for use of materials of studies is inadequate in every seminary. (2) Increase of rooms expected: 16 rooms (29.7 sq.m. for each room) 1 room for collected data (29.7 sq.m.)
Psychology	44.6	2	
History	29.7	4	
Japanese Literature	29.7	3	
English Literature, No. 1	29.7	3	
" No. 2	44.6	6	
French Literature	29.7	2	
German Literature, No. 1	29.7	3	
" No. 2	29.7	4	
Law	29.7	2	
Economics	29.7	3	
Teacher's common room	29.7		
Rooms for materials, Experiment-rooms			

(5) Facilities for Study:

Records of books and Equipment are given in Library List.
Lack of Professional Journals Periodicals available from abroad is proving a deterrent factor (which see, Library List).

In view of the present difficulty in obtaining professional journals and periodicals, wishes for the following are voiced:

- (1) Simplification of procedures for obtaining these publications.
- (2) Increase of Funds.
- (3) Furtherance of Book Donations.

VI-608

5 Faculty Personnel:

5

Humanities Department

Subject	Prof.	Assist. Prof.	Lecturer	Assist.	Total
Philosophy		3			3
Psychology	2				2
History	2	1	1		4
Jap. Literature	1	2			3
Eng. and Amer. Literature	3	3	1	3	10
German Literature	1	3	2	1	7
Law		2			2
Economics		3			3
Total	9	17	4	4	34

1. Adjustments should be made in the organization of School Administration so that Research Workers will be freed from miscellaneous duties other than class-room and research work.

2. Such assistants as a photograph technician and an electrician should be added to the Psychology Staff.

Education Department

Subject	Prof.	Assist. Prof.	Instructor	Assist.	Total
Pedagogy	1	5	1		7
Philosophy	1		1		2
Psychology	2	2	1		5
History		1			1
Human Geography		1	2	1	4
Japanese		3			3
English Literature		3			3
German Literature		1			1
aesthetic	1				1
Economics		2	1		3
Sociology		1			1
Domestic Science			1		1
Total	5	19	7	1	32

VI-608

4. Communication of Study

Opportunity has been granted to Mr. Iida of Takada Branch and to Mr. Takeuchi of Humanities Dept. to study American Literature at American Universities. The former has returned, and the latter is now in America.

Much is expected of them in their contribution to the work of this University. Mr. Shibuya of the Education Department is studying Political Science at Tokyo University.

The Society of Research in Law and Economics of this University is publishing periodicals and exchanging publications with other Universities.

However, the present difficulty in obtaining from abroad publications on Cultural Sciences and the inadequate budget of expenses for attending Academic Meetings and Conferences in this country are hindering our efforts in communication and exchange of ideas and information.

5. Organ for Publication of Research Work

Plans are under way for starting Publications of Studies in the fields of Cultural Science, but how to finance them is a serious problem.

- (1) Wish for an even broader program for sending University men abroad for study (extension of tenure; easing of Age limits; easing of emphasis on applicants' hearing and speaking abilities in English)
- (2) Budgetary measure for employing Foreign Nationals as full-time instructors.
- (3) As an alternative for the preceding, arrangements should be made for employing itinerant lecturers who will teach two or three Universities.
- (4) Funds should be provided for in the Budget for publication of papers written in European languages (i.e. English, German or French)
- (5) Wish for donations by American Universities of their publications.
- (6) Wish for Easing of Limits set on Importation of Foreign Books required by academic studies.

As was mentioned under 4, (4), wish for a Budgetary measure which will generously finance the publication of the findings of the research work in this University.

VI-608

6 The Living Condition of Research Workers:

The low standard of living of college people as pointed out in the Report of the Mission of the American Advisors on Cultural Science, applies to the research workers of this University. It is obstructing their efforts in active research.

Comparison of Monthly Incomes as they stand on Sept. 30, 1950

Items	No. of people polled	Basic Salary	Area Allowance	Total	Family Allowances	Total Income including Tax Levy
Niigata University: Profs. and Clerks	Average 1500	6,100	712	6,812	1,050	7,862
Teaching Staff	60	9,531	1,133	10,664	1,423	12,087
Certain Bank in Niigata city	35	14,800	4,440	19,240	1,800	21,040

Family Allowances are based on a wife and 1 1/2 children. Private Concern Employees are represented by an old Government University graduate.

Salaries compared of Former Government Graduates in our Humanities Dept. and Private Concern (based on Experience)

No. of people polled	Years of Experience		Basic Salary	Area Allowance	Total	Family Allowance	Total Income including Tax Levy
5	1-- 4	This University	4,660	466	5,126		5,126
		X Bank	6,600	1,980	8,580		8,580
4	8--12	Univ.	9,060	1,042	10,102	1,359	11,461
		Bank	14,700	4,410	19,110	2,050	21,160
12	13--18	Univ.	10,338	1,170	11,508	1,359	12,867
		Bank	15,700	4,710	20,410	2,050	22,460
5	19--22	Univ.	11,469	1,283	12,752	1,359	14,111
		Bank	16,200	4,860	21,060	2,050	23,110
9	23---	Univ.	13,210	1,457	14,667	1,359	16,026
		Bank	17,300	5,190	22,490	2,050	24,540

Notes: University people receive 60 % of the figures given in the column of Total once a year.
Bank people receive bonuses exceeding one month's income twice a year plus overtime allowances of 2,000 --- 10,000 yen.

VI-608

List of Questions

1. Comparison of Fields and Techniques of Study between Japanese and American Cultural Scientists. (Kawasaki).
2. (A) New Trends among Philosophical Circles in America and (B) Organization of the Department of Philosophy in American Universities (for instance, University of Drake) (Ishida).
3. In which Field of Science is Psychology included in America, Natural Science or Cultural Science? (Matsumiya).
4. Current Trend of Sociological Jurisprudence in America. (Nakajo)
5. Recent American Movements in the Study of the Orient, especially of Japan. (Uemura).
6. Foreign Language Education; Especially, Teaching of German in the United States. (Nakajima).
7. Textbook Problems in Foreign Language Education in Japanese Universities. (Ochiai).
8. (A) Level of Living of Cultural Scientists in American Universities and (B) Research funds. (Saito).
9. (A) Approximate proportion of School Budget and Library Budget in American Universities and (B) Sources of Library Funds.
10. Bottleneck in Obtaining Books from abroad; Latest Development attained by Authorities concerned through their efforts for Expediting Importation of Literature of Cultural Science. (Nomoto).
11. Conspectus of studies in Cultural Science by Department of Education Faculty Members in American Universities:-
For example, (A) Fields or Trends: Study, Subjects of Lecture, etc. of Professors of Literature and History and (B) How do cultural Scientists on Education Department Faculty differ from those on other Departments of Cultural Science, such as Departments of Literature, Law, Economics, etc.? (Tamai).
12. War-time and Post-war Life of American Youths (Adolescents and College Students). (Tamai).

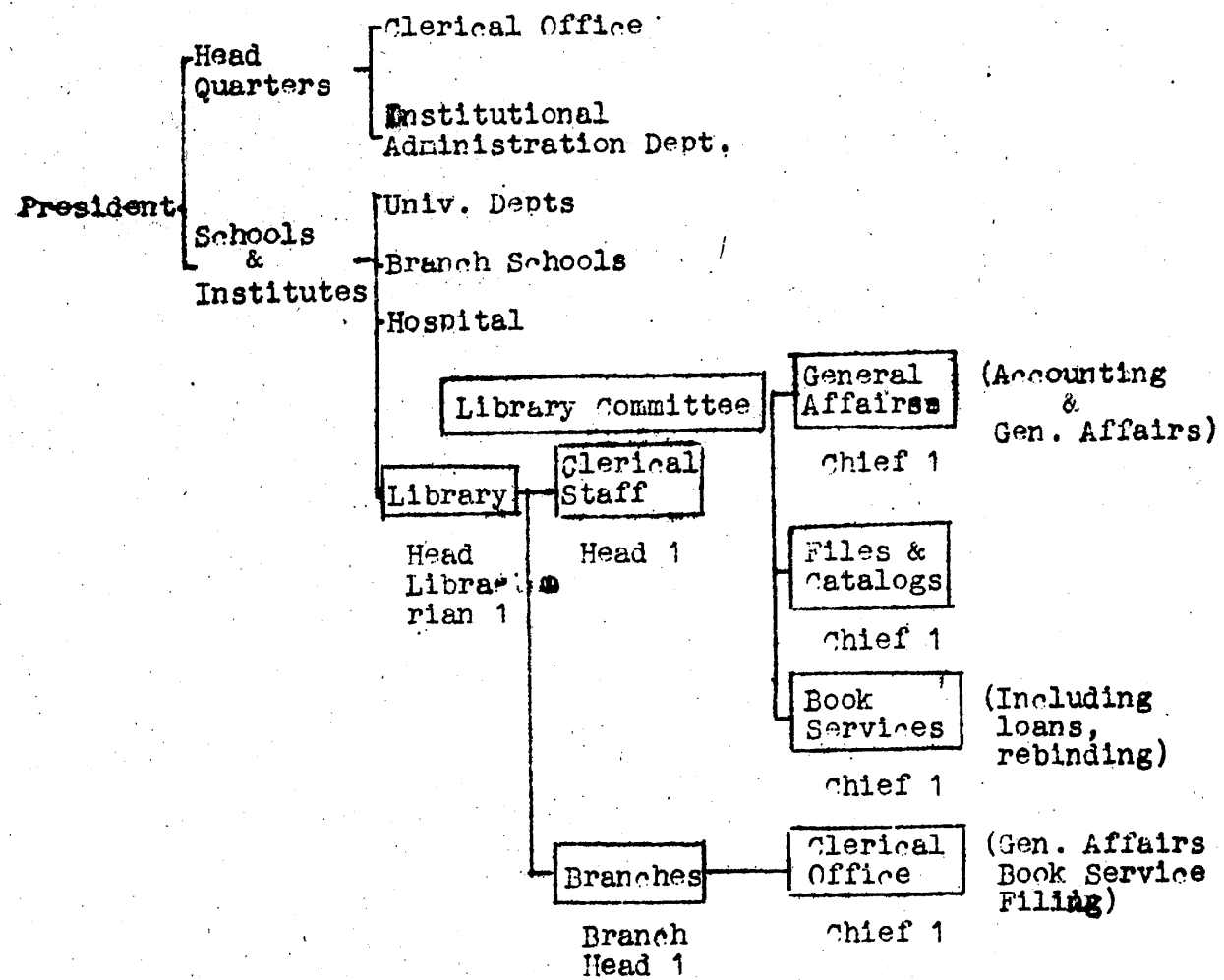
VI-608

8 Library

(1) Use of Library (last one year)

Dept.	Number of readers	Number of books lent
Humanities	5,250	10,500
Education	3,716	10,350
Medicine	28,397	37,397 <i>5,000</i>
Technology	3,201	5,394
Takada Branch	13,583	17,183
Nagaoka Branch	13,762	19,571
Shibata Branch <i>Agriculture</i>	4,180 <i>3,527</i>	7,403 <i>5,825</i>
Total	75,616	113,223 <i>113,254</i>

(2) Organization and Characteristics of the Library



A Library Committee is organized and takes care of important problems in Library Administration. A branch is set up at each Department and Branch School, and each branch functions as a complete unit. Master Catalogs comprising all the information about Branch Libraries are being prepared so that the Entire Library will operate as an organic whole and teachers and students will have a free access to any book anywhere.

VI-608

(3) Measures for Improvement:

- Building of Book-Storage Rooms (Agricultural Dept., Humanities Dept.)
- Construction of Main-Library Building (Main Library)
- Improvement of Information Service by installing a Duplicator.

Pertaining

Wishes to CIE Libraries

Under the present circumstances which render it extremely difficult for us to obtain books from abroad, we feel greatly indebted for the opening of CIE libraries.

From the Standpoint of Cultural Scientists we want to express the following wishes and suggestions to CIE Library Officers.

- (1) Increase of books and journals dealing with Original Studies.
- (2) Adjustments in Book Selection so that the Library will function more as a professional or academic library. Hope a way will be opened so that Scientists can make known to CIE officers the books they need most.
- (3) Increase of copies of the books in great demand
- (4) Wish to have magazines transferred to the University libraries after a certain period.

(5) Request from Nagaoka Engineering Department:

Enlargement of the Nagaoka Branch of the CIE Library

Request from Agricultural Dept.:

Want to have series of magazines supplemented by back numbers

VI-608

(Appendix) On Loans of Books from G. I. E.

_____ Department of Education

Thanks to the good-will of G.H.Q, we are enjoying the privilege of a loan of 218 books bearing on Education. The set offers us many valuable books which otherwise would be utterly beyond our reach, and is proving an immense benefit to us. In order to ensure a wide use of these books by many readers we have made lists of the books and distributed them among various departments of our University, other schools in Niigata City and the Prefecture Board of Education, and also made announcements at various meetings of teachers in this prefecture.

The use of the books is provided for by installing special racks and free access is practiced. Also they are loaned to people from outside as well as teachers and students of our University. At the same time we have organized in our Education Department a society for Study of Principles and Practice of New Education, and every month through bulletins, newspapers and radio, we are keeping up our efforts to communicate the work of the society to our brethren in and out of our school. Members of the society report on their studies at monthly conferences of teachers.

- (1) Social Science and Educational Sociology in America
- (2) Educational Controversies Centering Around the so-called Crisis
_____ Scholasticism of the Twentieth Century _____
- (3) Progression and Regression in One's Life
- (4) Vocational Psychology

Every month a report is made to the ministry of Education on the use of the loaned books. So we do not include herein any information on their use. As stated above, our studies are being greatly promoted by these books and we are most happy about it. It is our ardent desire, however, that more books of such high value will be added to the loan list. We hope that we are not hoping in vain.

VI-608

Takada Branch School desires a loan of twice as many books on Education, Psychology, Art and American literature, and of the following magazines:

- Art Bulletin
- American Paint Journal
- Bulletin of the Metropolitan Museum of Art
- British Journal of Educational Psychology
- Journal of Educational Psychology
- Association of American Colleges Bulletin.
- Music Educators Journal
- Music in Education
- Musical America
- Athletic Journal
- Journal of Geography
- Economic Geography
- Geographical Magazine
- Geographical Review
- American Historical Review
- American Photography

VI-608