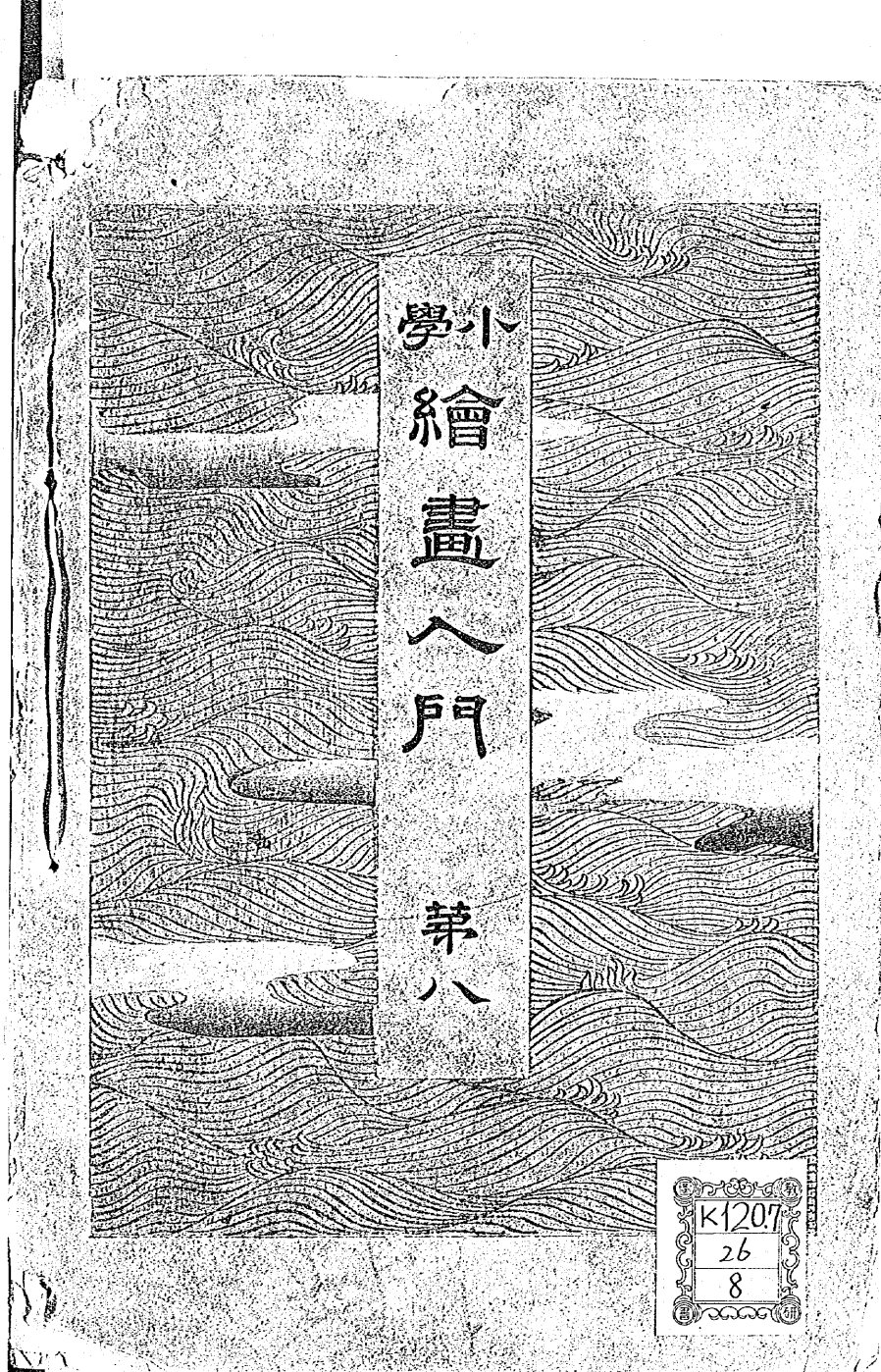


K120.7

26

8



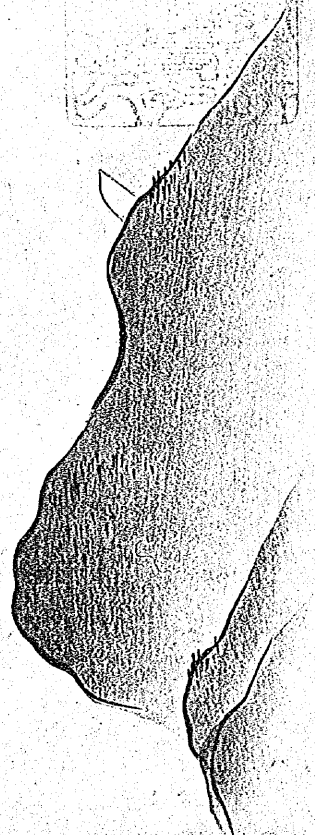
學小繪畫入門
第八

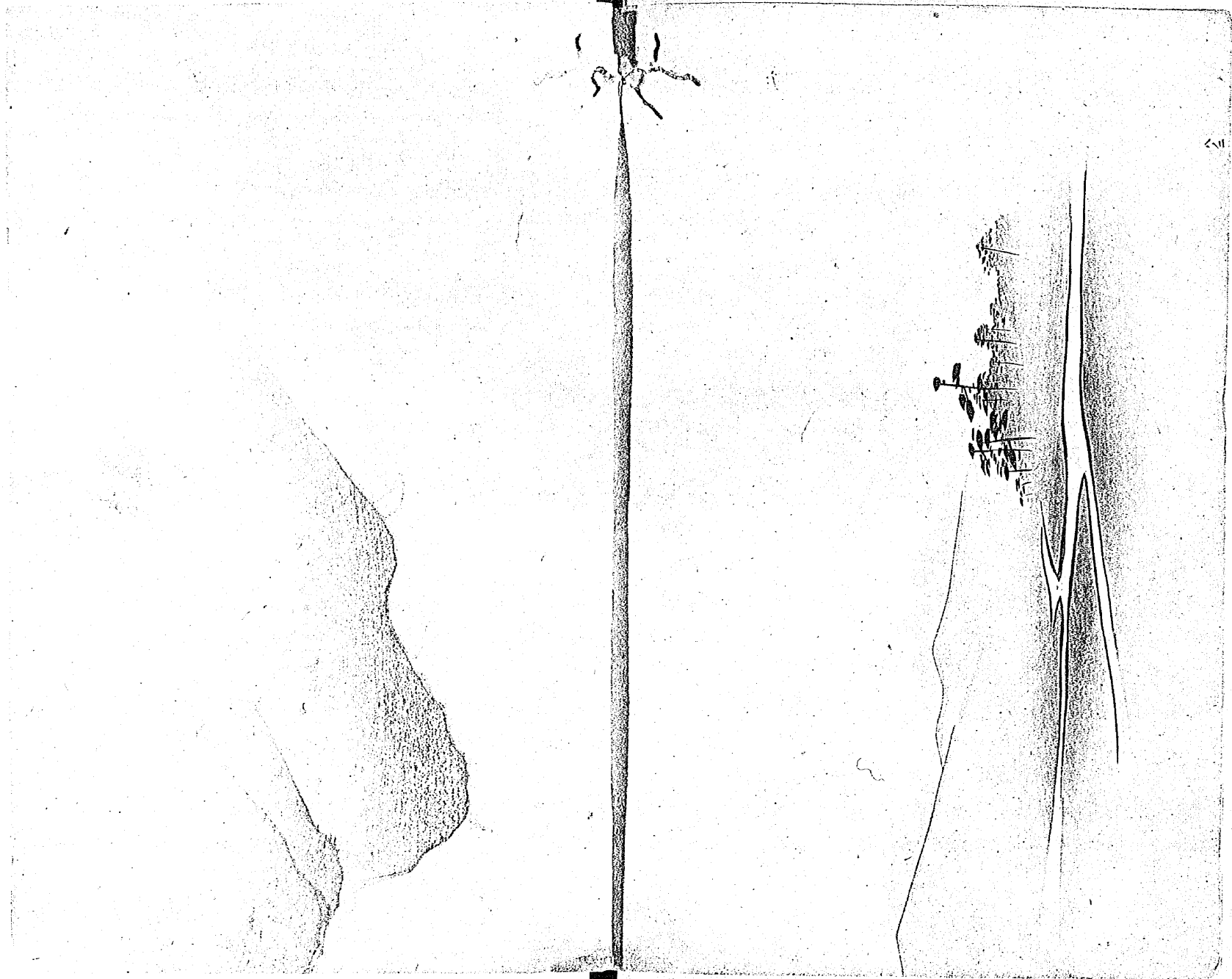
K120.7
26
8

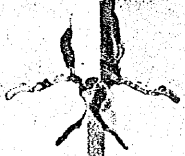
Vertical columns of faint, illegible text on the left page of the manuscript.



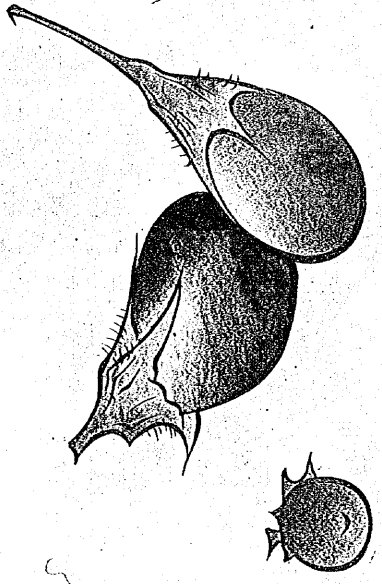
Two square seals with Chinese characters. The top seal contains the characters '胡氏' (Hu) and '氏' (Shi). The bottom seal contains the characters '氏' (Shi) and '氏' (Shi).



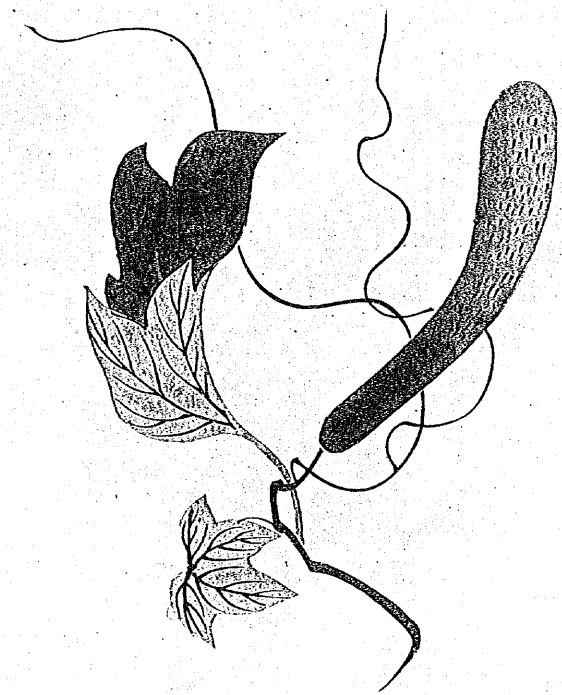
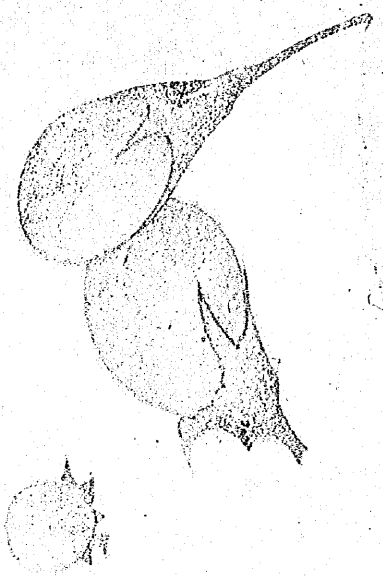


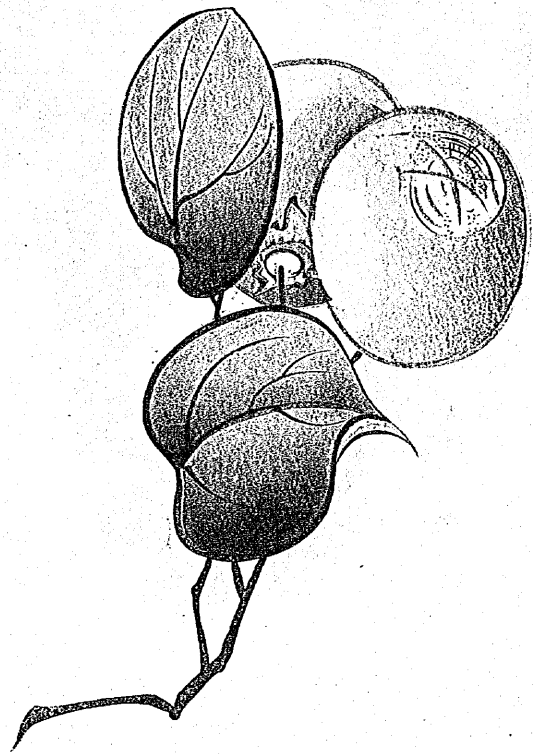
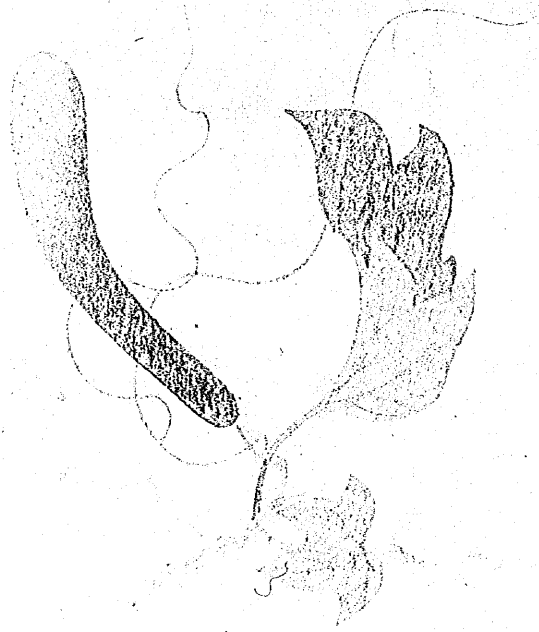


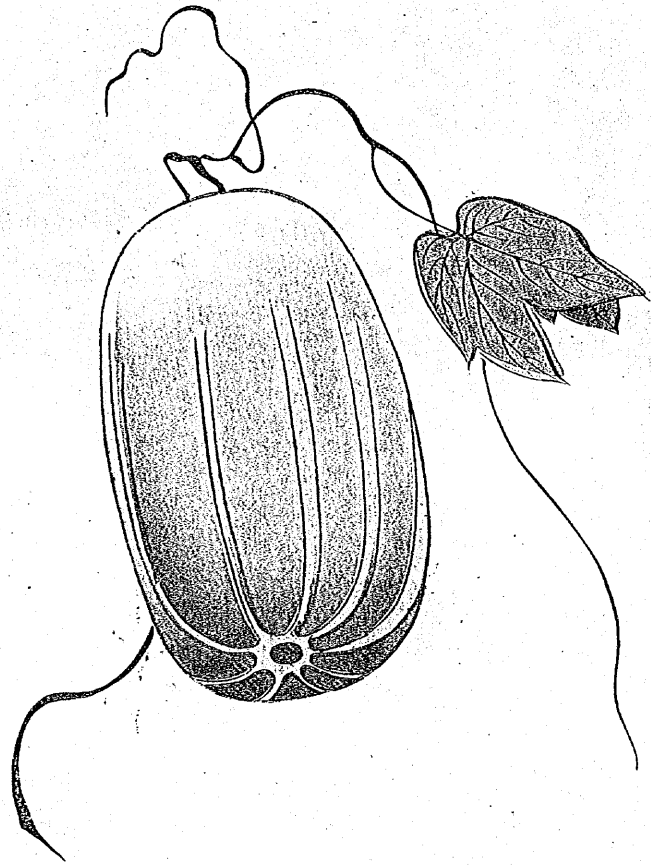
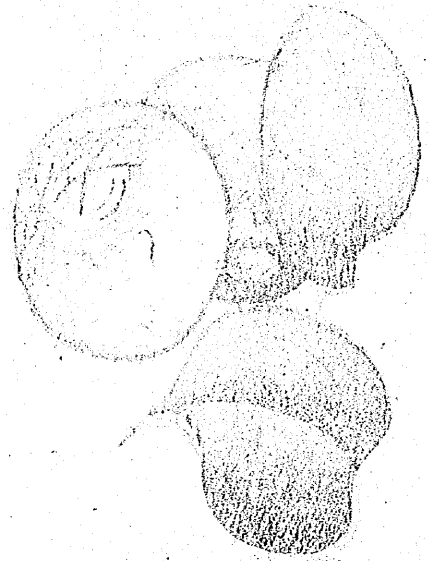
203

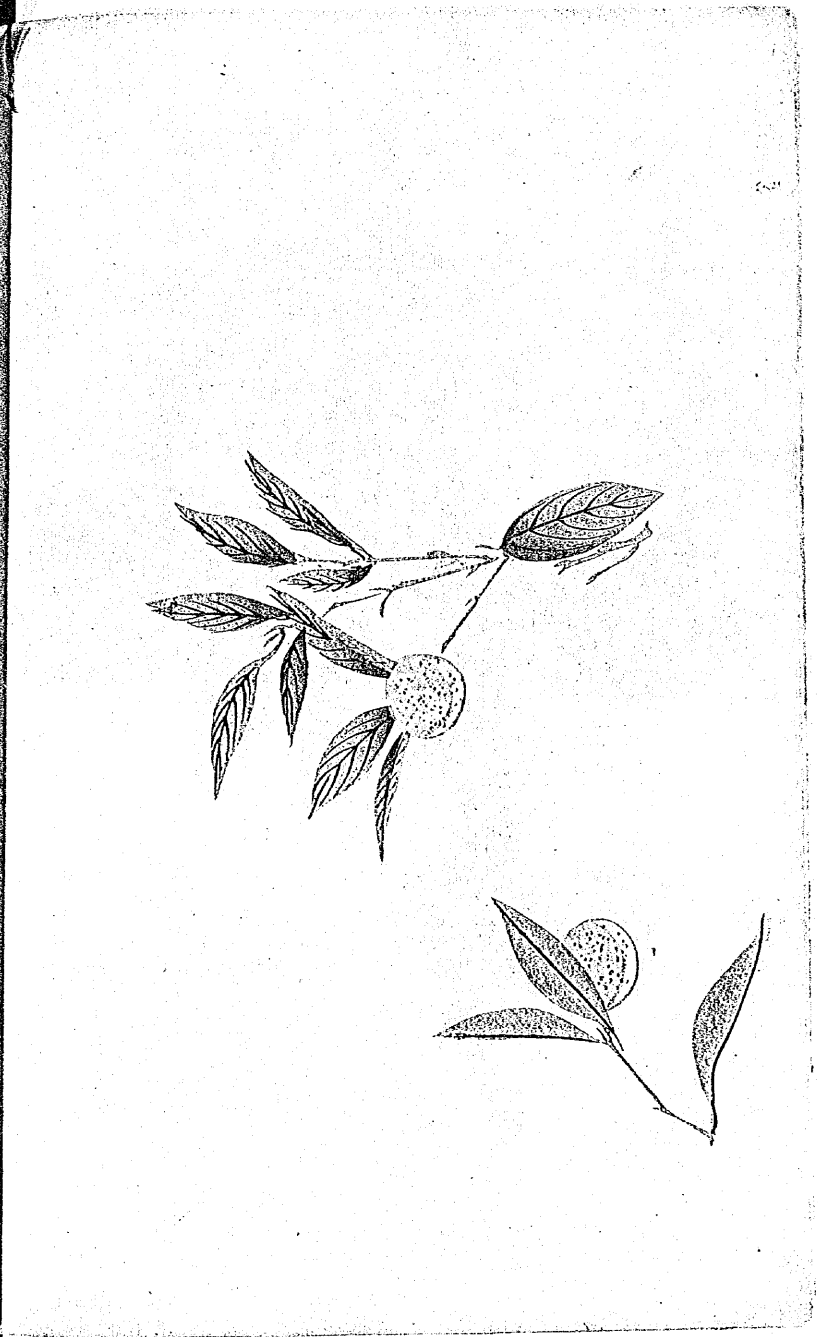
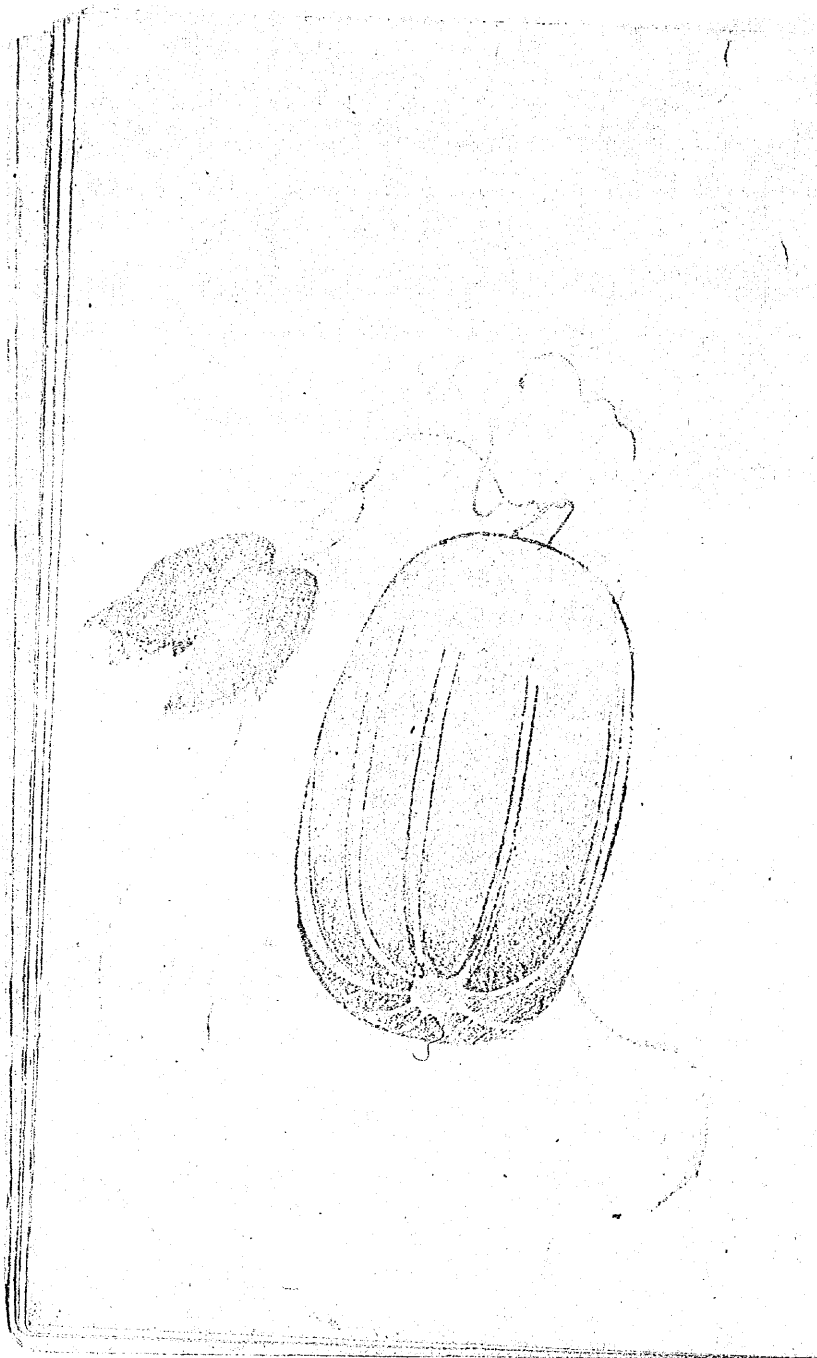


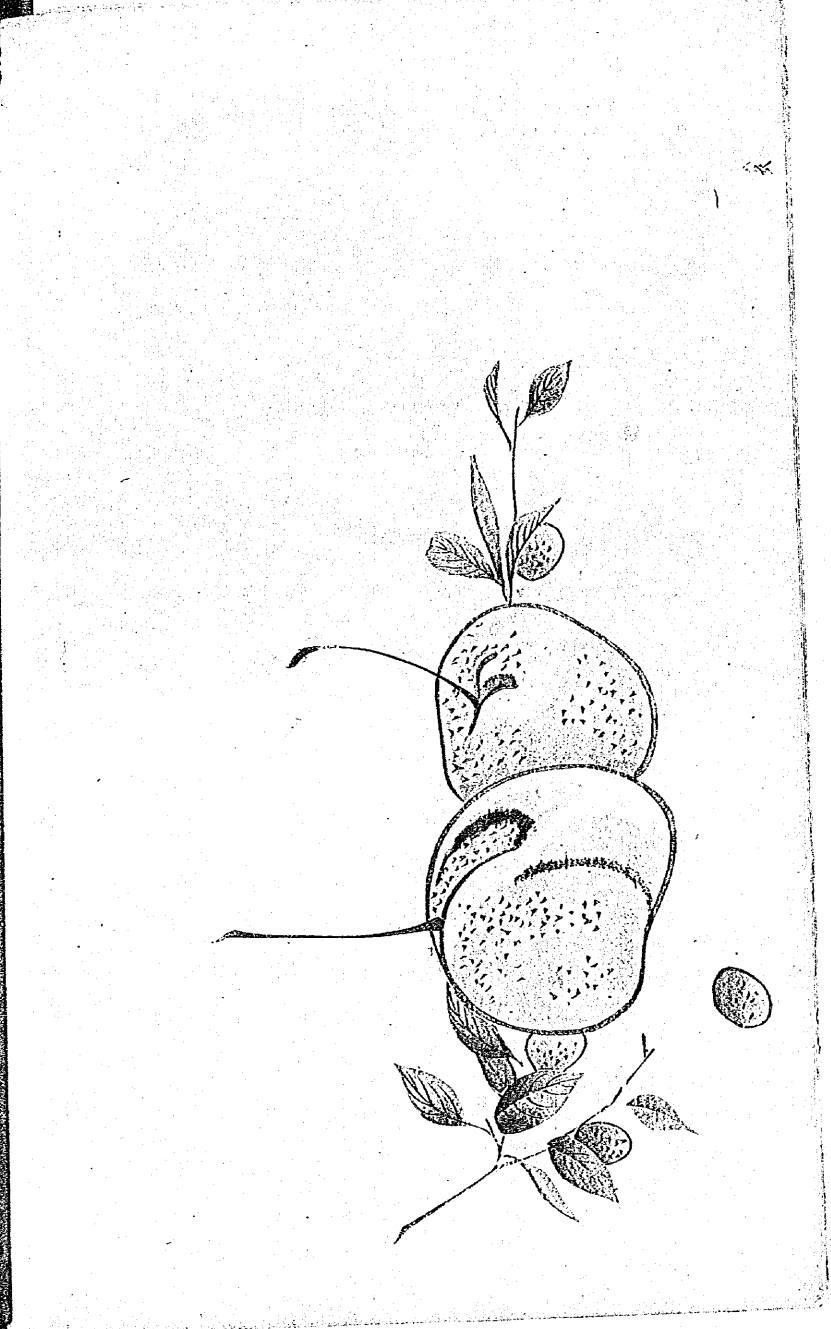
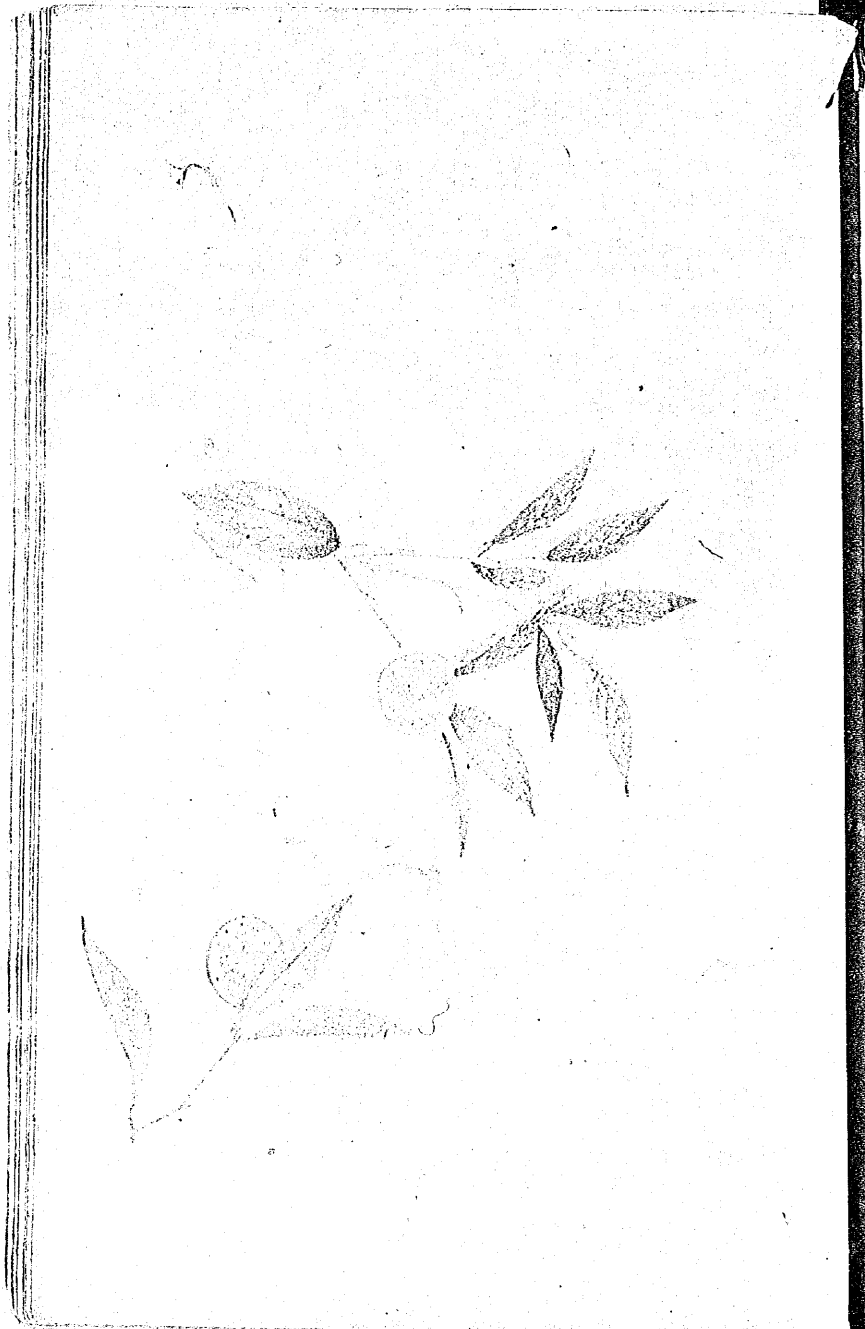
<B

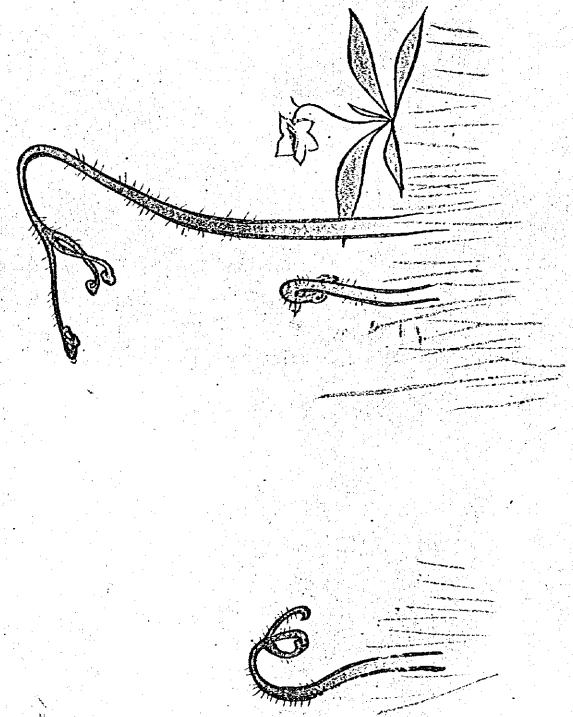
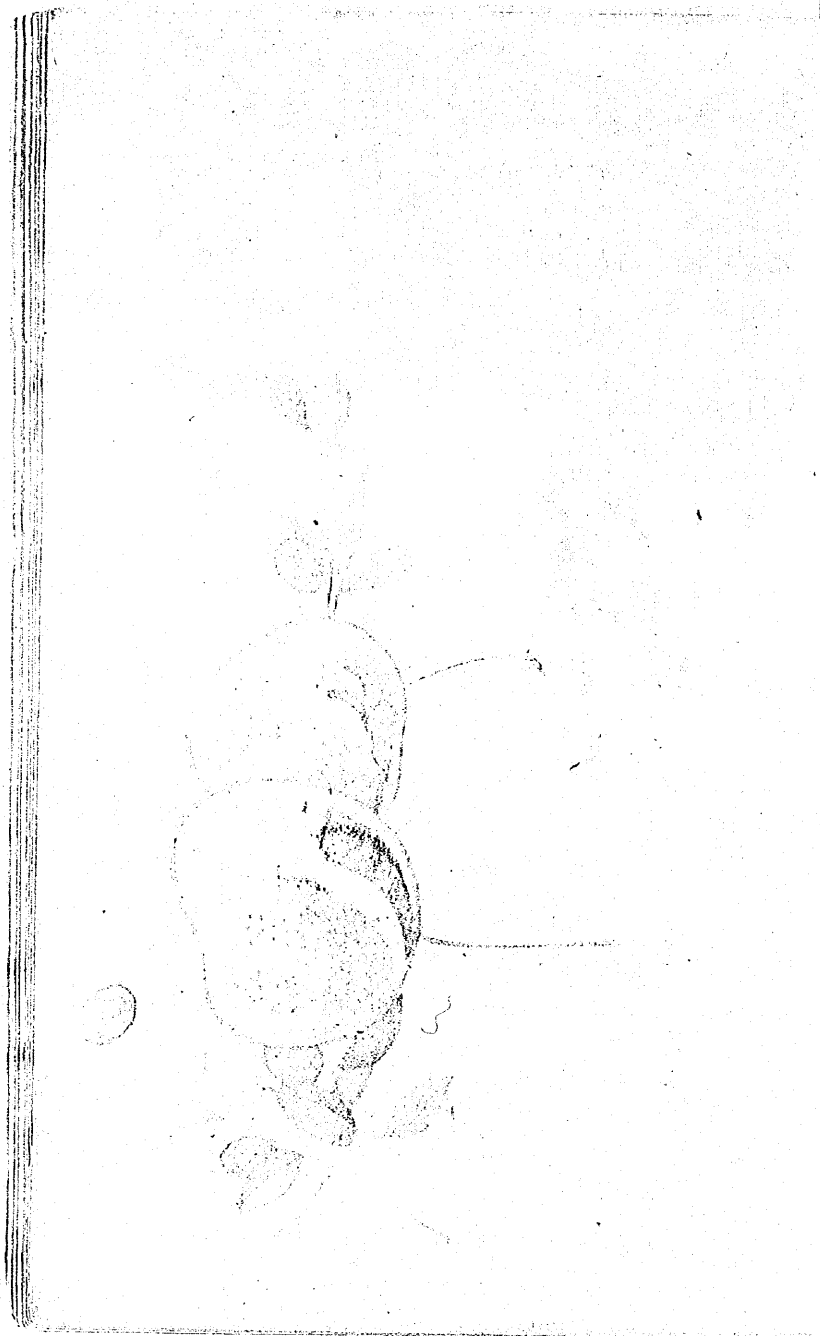


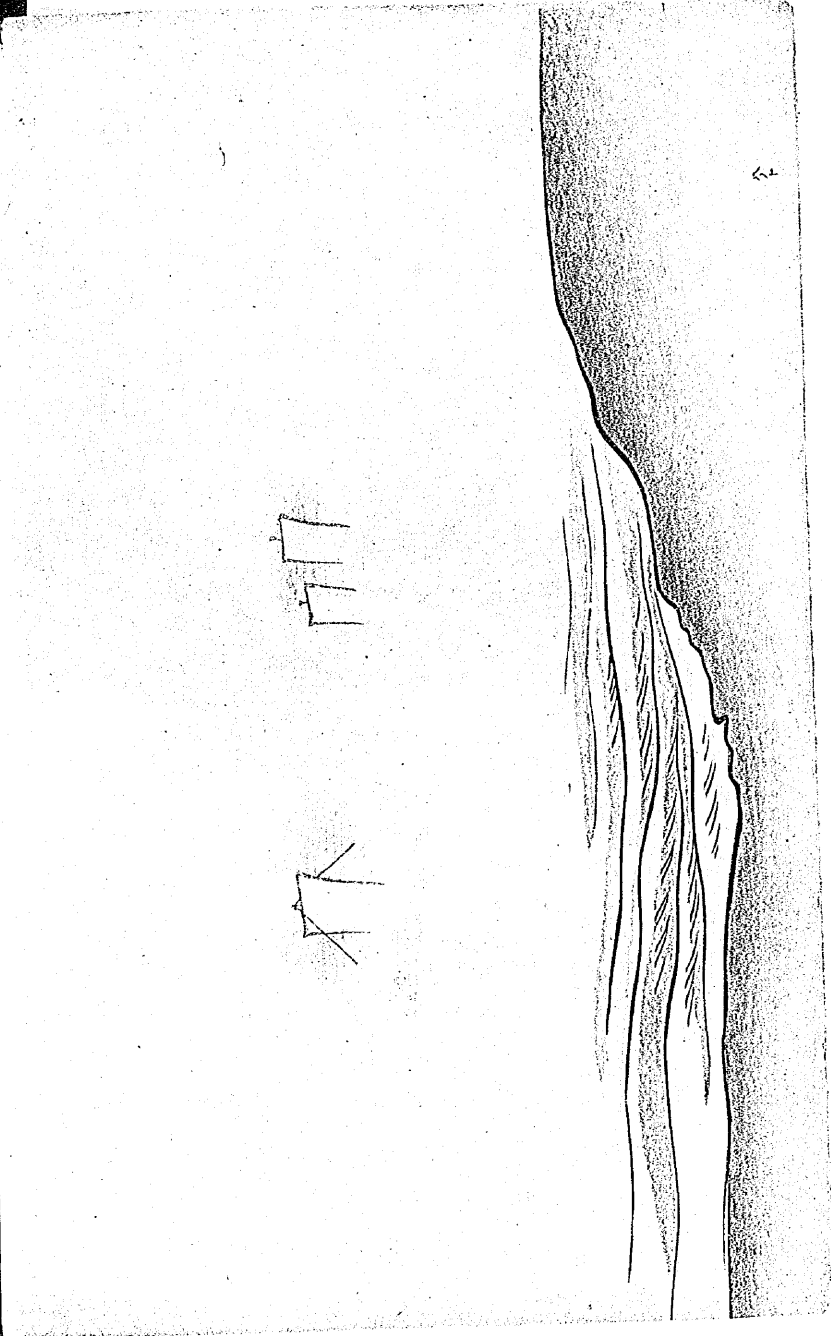
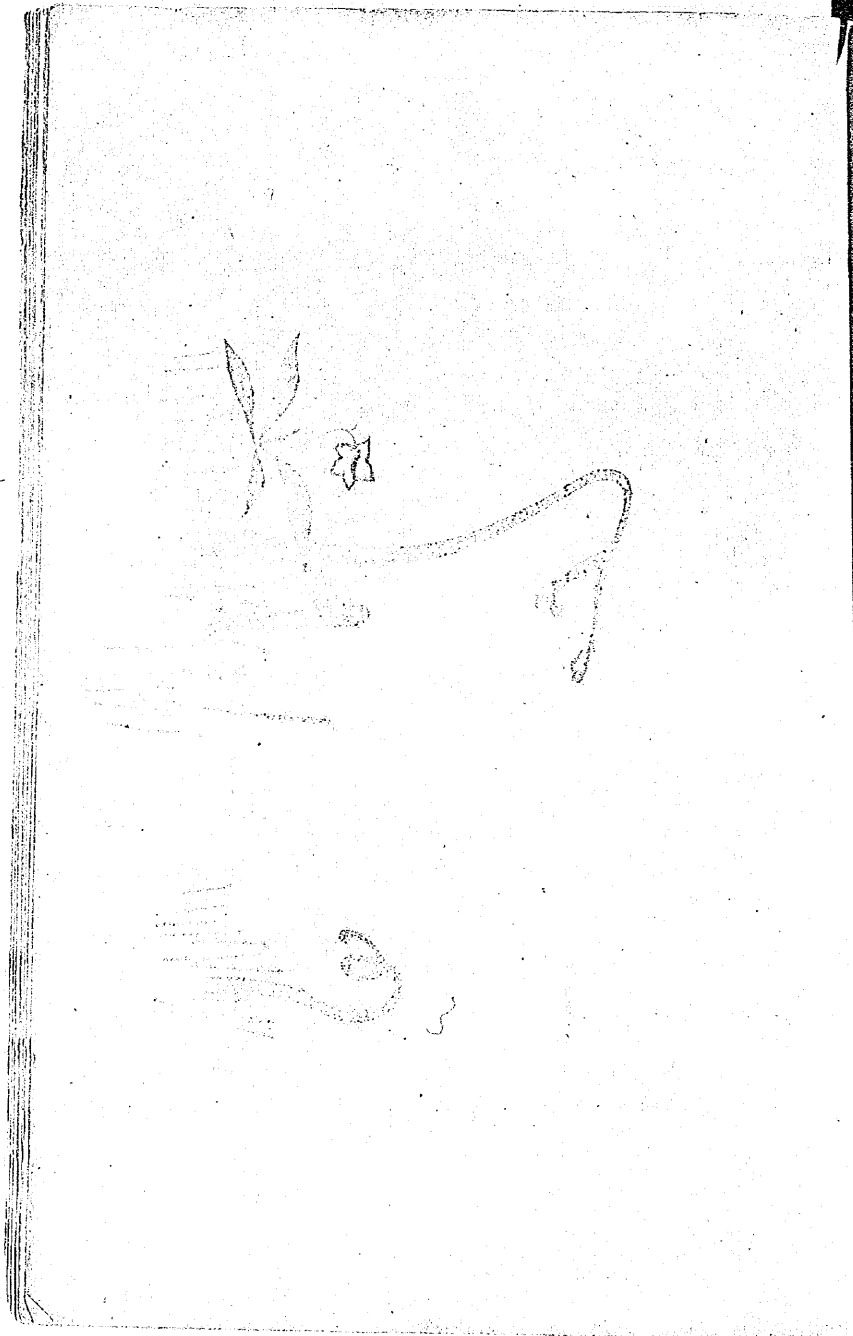












K1207

明治二十五年三月五日印刷
同 年同月十四日出版

定價金八錢

金港堂書籍會社編輯所 編輯

發行者

金港堂書籍會社
東京市日本橋區本町三丁目十七番地

代表者

三宅米吉
東京市本郷區長總町六番地

印刷者

日置九郎
東京市日本橋區本町三丁目十七番地

賣捌所

金港堂
大阪市東區南本町四丁目百廿番屋敷
宮城縣仙臺市國分町五丁目百三十一番地

